 ENGINEERED IN USA



Wechat ID



**Flamingo**  
NOTHING BUT THE BEST

**FLAMINGO CAR CARE TECH CO., LIMITED**

ADD: RM210, Building No.2, Greenland CloudMetropolis, No.129 Huangyuan Road, Baiyun District, Guangzhou, China

TEL: 0086-20-86215220

FAX: 0086-20-86215230

[www.flamingocarcare.com](http://www.flamingocarcare.com)

[sales@flamingocarcare.com](mailto:sales@flamingocarcare.com)



**Flamingo**  
NOTHING BUT THE BEST

**CAR CARE**  
PRODUCT  
MANUAL  
2024-2025



# ABOUT US

Established in 2006, Flamingo Car Care Tech Co., Ltd is a professional manufacturer and exporter which co-founded by Guangdong Hosen New Material Industrial Co.,Ltd. and Flamingo Car Care Tech Inc., engaged in researching, producing and selling of car care products, spray paint, special coating, industrial cleaning and surface treating agent.

Through 17 years of precipitation and accumulation, Flamingo owns the profound understanding of car care products, world's leading research and development ability, excellent planning team and manufacturing experience for nearly a century, which prosper the selling of Flamingo car care products in North America. To make more car lovers around the world to recognize and use Flamingo products, Flamingo Car Care Tech Inc. collaborates with Guangdong Hosen New Material Industrial Co., Ltd for the establishment of research and production

base, promoting the Flamingo car care products to all over the world.

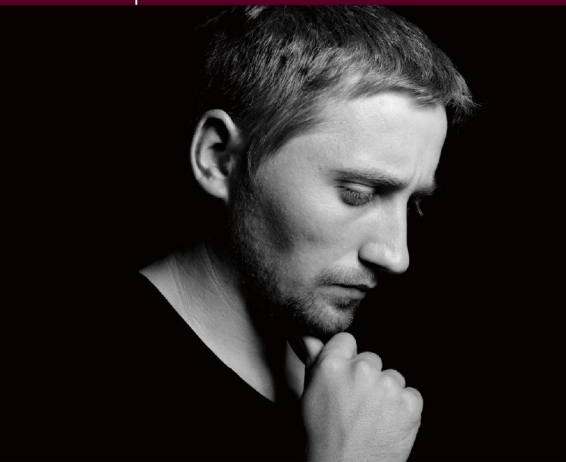
The new production base is located in Wengyuan, Guangdong. With beautiful environment and convenient transportation, it covers an area of nearly 30,000 square meters, equipped with advanced experimental and production equipment specially introduced from USA, German and Switzerland. At present it owns 6 fully-automatic production line for aerosol, 1 for paste filling, 1 for liquid filling and 1 for emulsifying wax, with an daily production capacity of 150,000 cans. The production base has obtained the qualification for aerosol production in China, and passed the ISO9001 quality system certification and ISO14001 environment system certification. Owing leading USA technical standard and large production capacity, the base produces the Flamingo car care products, at the same maintains long-term friendly cooperative relations with many international well-known companies, and provides them with professional, complete OEM and ODM service.

## COMPANY PRINCIPLE

Innovation, Professional, Reliable,  
To Create Value for Customers!

[www.flamingocarcare.com](http://www.flamingocarcare.com)

# CERTIFICATION





# WAX & DRY SPRAY WAX >>>>>

**Flamingo**

**WAX & DRY  
SPRAY WAX**

1-STEP SPRAY WAX ON WET CAR &  
DRY TO AN INSTANT SHINE



F301

**WARNING!**  
FOR BODILY  
SAFETY ON BACK



RAIN REPELLENT



LONG LASTING  
PROTECTION



ACCELERATES  
DRYING



MICRO-CUT  
POLISHING AGENTS



PREVENT  
WATER SPOT

Flamingo

NET WT. 13.24 OZ. (378g)  
F301

FOR BODILY  
SAFETY ON BACK



SUITABLE FOR:



MOTORCYCLE



AUTOMOBILE



LEATHER



BICYCLE



TIRES



LEATHER SHOES

ULTRA SHINE 11 >>>>>>

# QUICK FRESH DEODORIZER





*FRAGRANCE FOR YOUR CAR* >>>>>>

**ULTIMATE  
POWER  
FOR  
YOUR  
ENGINE**



*MOTOR OIL* >>>>>





PEEL COAT

500MLX12PCS/5.88KGS/0.014CBM  
Product Code:F001

RUBBER SPRAY

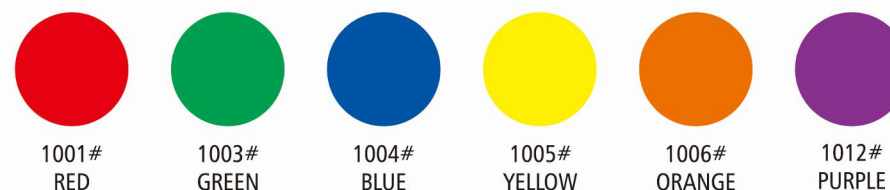
450MLX24PCS/10.44KGS/0.024CBM  
Product Code:F023



COLOR SELECTION



FLUORESCENT SELECTION







# SPRAY PROTECTION

31# SANDY BEIGE	33# BEIGE	37# FRESH GREEN
39# BLACK	40# WHITE	89# GREY
1380# GRASS GREEN	313# LIGHT RED	305# LIGHT GREEN
41# CANARY YELLOW	27# LEAF GREEN	21# MEDIUM BLUE

## SPRAY PROTECTION

500MLX12PCS/5.28KGS/0.014CBM  
Product Code:F2098



190# TRANSPARENT	6# ORANGE RED	21# MEDIUM BLUE
33# BEIGE	36# SILVER	27# LEAF GREEN
40# WHITE	5# PURPLE	41# CANARY YELLOW
?# CUSTOMIZATION	?# CUSTOMIZATION	?# CUSTOMIZATION

## TRANSPARENT SAND PROTECTION

500MLX12PCS/6.84KGS/0.017CBM  
Product Code:F064



# CAR WAX



### Car Polish Wax

230GX12PCS/4.20KGS/0.016CBM  
Product Code:F041



### Diamond Hard Wax

180GX12PCS/3.60KGS/0.016CBM  
Product Code:F042



### Rubbing Compound

230GX12PCS/4.23KGS/0.016CBM  
Product Code:F043



### Rubbing Compound

946MLX12PCS/13.55KGS/0.025CBM  
Product Code:F050



### Polishing Glaze

946MLX12PCS/13.30KGS/0.025CBM  
Product Code:F051



### Premium Coating Film

946MLX12PCS/12.65KGS/0.025CBM  
Product Code:F052



### Platinum Hard Wax

200GX24PCS/8.65KGS/0.03CBM  
Product Code:F087



### Ceramic Coating Wax

300GX12PCS/5.56KGS/0.019CBM  
Product Code:F091



### Crystal Liquid Wax

473MLX12PCS/6.80KGS/0.01CBM  
Product Code:F040



**Color Miracle**

410MLX24PCS/11.30KGS/0.02CBM  
Product Code:F361K/F361R/F361S/F361W/F361B



**Spray Polish Wax**

450MLX24PCS/9.05KGS/0.024CBM  
Product Code:F044



**Ceramic Polish & Wax**

410MLX24PCS/11.30KGS/0.02CBM  
Product Code:F600



**Glass Restorer**

410MLX24PCS/11.30KGS/0.02CBM  
Product Code:F360



**Carnauba Spray Wax**

500MLX12PCS/7.10KGS/0.016CBM  
Product Code:F300



**Wax & Dry Spray Wax**

500MLX12PCS/7.10KGS/0.016CBM  
Product Code:F301



**Crystal Coating**

500MLX12PCS/6.80KGS/0.016CBM  
Product Code:F140



**Crystal Coating**

250MLX24PCS/7.15KGS/0.016CBM  
Product Code:F112



**Metal Polish**

300MLX24PCS/7.50KGS/0.014CBM  
Product Code:F390



**Headlight Restorer**

300MLX24PCS/7.50KGS/0.014CBM  
Product Code:F391



**Scratch Remover**

300MLX24PCS/7.50KGS/0.014CBM  
Product Code:F392



**Carnauba Car Wax**

300MLX24PCS/7.50KGS/0.014CBM  
Product Code:F393



**Plastic Restorer**

300MLX24PCS/7.50KGS/0.014CBM  
Product Code:F394



**Leather Coating**

300MLX24PCS/7.50KGS/0.014CBM  
Product Code:F395



**Dashboard Coating**

300MLX24PCS/7.50KGS/0.014CBM  
Product Code:F396



**Polymeric Coating Wax**

300MLX24PCS/7.50KGS/0.014CBM  
Product Code:F397



# AIR FRESHENER



ENGINEERED IN USA

AIR FRESHENER

## EVA Air Freshener

12PCSX10INNER/6.88KGS/0.058CBM  
Product Code:F092



## EVA Air Freshener

12PCSX10INNER/6.13KGS/0.042CBM  
Product Code:F093



AIR FRESHENER

EVA Air Freshener

12PCSX20INNER/6.40KGS/0.045CBM  
Product Code:F130C



Cherry Strawberry Vanilla Blueberry



New Car Cologne Black Opium Black Ice

EVA Air Freshener

12PCSX20INNER/6.40KGS/0.045CBM  
Product Code:F130F



Cherry Strawberry Vanilla Blueberry



New Car Cologne Black Opium Black Ice

AIR FRESHENER

EVA Air Freshener

12PCSX20INNER/6.40KGS/0.045CBM  
Product Code:F130D



Cherry Strawberry Vanilla Blueberry



New Car Cologne Black Opium Black Ice

EVA Air Freshener

12PCSX20INNER/6.40KGS/0.045CBM  
Product Code:F130H



Cherry Strawberry Vanilla Blueberry



New Car Cologne Black Opium Black Ice

AIR FRESHENER

Peach Perfume

330MLX24PCS/6.61KGS/0.019CBM  
Product Code:F011P



Jasmine Perfume

330MLX24PCS/6.61KGS/0.019CBM  
Product Code:F011J



Rose Perfume

330MLX24PCS/6.61KGS/0.019CBM  
Product Code:F011R



Lemon Perfume

330MLX24PCS/6.61KGS/0.019CBM  
Product Code:F011L



Strawberry Perfume

330MLX24PCS/6.61KGS/0.019CBM  
Product Code:F011S



Apple Perfume

330MLX24PCS/6.61KGS/0.019CBM  
Product Code:F011A



Organic Air Freshener

50GX144PCS/10.50KGS/0.03CBM  
Product Code:F102O OUD

- F102V VANILLA
- F102P PEACH
- F102J JASMINE
- F102S STRAWBERRY
- F102L LEMON
- F102C CHERRY
- F102B DARK ICE
- F102G BUBBLE GUM
- F102N NEW CAR
- F102K CRANBERRY
- F102R ROSE
- More.....



Paper Air Freshener

24PCSX24INNER/10.50KGS/0.05CBM  
Product Code:F123C COCO

- F123B DARK ICE
- F123L LAYALI
- F123O OUD
- More.....



Spray Auto Perfume

250MLX24PCS/6.84KGS/0.016CBM  
Product Code:F128O OCEAN

- F128A ANTI TOBACCO
- F128G GARDENIA
- F128N NEW CAR
- More.....



Hanging Air Freshener

5MLX120PCS/4.30KGS/0.024CBM  
Product Code:F129B DARK ICE

- F129C COCO
- F129L LAYALI
- F129O BLACK OPIUM
- More.....



AIR FRESHENER

# INTERIOR & EXTERIOR

### Foam Cleaner

650MLX12PCS/8.23KGS/0.018CBM  
Product Code:F002



### Pitch Cleaner

450MLX24PCS/9.05KGS/0.024CBM  
Product Code:F012



### Sticker Remover

450MLX24PCS/9.05KGS/0.024CBM  
Product Code:F013



### Furniture Polish

450MLX24PCS/9.05KGS/0.024CBM  
Product Code:F019



### Helmet Disinfecting Foam

450MLX24PCS/11.12KGS/0.024CBM  
Product Code:F094



### Ultra Shine 11

250MLX24PCS/6.20KGS/0.016CBM  
450MLX24PCS/9.05KGS/0.024CBM  
Product Code:F116L/F133L



### Silicona Spray

450MLX24PCS/8.68KGS/0.024CBM  
Product Code:F090



### Dashboard Polish

650MLX12PCS/6.53KGS/0.022CBM  
Product Code:F084LA



### Silicone Dashboard Polish

650MLX12PCS/6.53KGS/0.022CBM  
Product Code:F105L



**Dashboard Polish**

220MLX24PCS/4.86KGS/0.014CBM

Product Code: F024L  
 F024S  
 F024P  
 F024J  
 F024R  
 F024A  
 F024H  
 F024E  
 F024G  
 F024D  
 F024C  
 F024O  
 F024B  
 F024N  
 F024V



**Dashboard Polish**

450MLX24PCS/9.05KGS/0.024CBM

Product Code: F004L/F004S/F004P/F004J/F004R/F004A/F004H



**Shines & Protects Protectant**

118MLX24PCS/3.72KGS/0.008CBM  
 Product Code: F025



**Shines & Protects Protectant**

295MLX24PCS/8.56KGS/0.016CBM  
 Product Code: F027



**Protects & Beautifies Protectant**

320MLX24PCS/9.08KGS/0.017CBM  
 Product Code: F104V/F104L



**Gloss Finish Protectant**

315MLX24PCS/9.20KGS/0.019CBM

Product Code: F315L/F315G/F315E/F315S/F315B



**Ultimate Protectant**

315MLX24PCS/9.20KGS/0.019CBM

Product Code: F316L/F316C/F316G/F316J/F316O/F316V



**Leather Polish**

500MLX12PCS/7.15KGS/0.016CBM  
 Product Code: F029



**Leather Cleaner**

500MLX12PCS/7.10KGS/0.016CBM  
 Product Code: F304



**Interior Glass Anti-Fog**

500MLX12PCS/6.98KGS/0.016CBM  
 Product Code: F309





**Car Wash Shampoo**

500MLX24PCS/14.28KGS/0.025CBM  
Product Code:F030



**Wash Wax**

500MLX24PCS/14.10KGS/0.025CBM  
Product Code:F031



**Windshield Washer**

500MLX24PCS/14.10KGS/0.025CBM  
Product Code:F032



**Glass Cleaner**

500MLX12PCS/7.15KGS/0.016CBM  
Product Code:F086



**Multi-Purpose Degreaser**

500MLX12PCS/7.15KGS/0.016CBM  
Product Code:F089



**3 IN 1 Quick Detailer**

500MLX12PCS/7.10KGS/0.016CBM  
Product Code:F302



**Car Wash Shampoo**

500MLX24PCS/13.75KGS/0.022CBM  
Product Code:F350



**Wash Wax**

500MLX24PCS/13.75KGS/0.022CBM  
Product Code:F351



**Windshield Washer**

500MLX24PCS/13.75KGS/0.022CBM  
Product Code:F352



**Car Wash Shampoo**

1LX12PCS/13.70KGS/0.023CBM  
Product Code:F342



**Wash Wax**

1LX12PCS/13.70KGS/0.023CBM  
Product Code:F343



**Dash & Glass Interior Detailer**

500MLX12PCS/7.10KGS/0.016CBM  
Product Code:F303



**Car Wash Shampoo**

5LX4PCS/21.80KGS/0.04CBM  
Product Code:F380



**Wash Wax**

5LX4PCS/21.80KGS/0.04CBM  
Product Code:F381



**Windshield Washer**

5LX4PCS/21.50KGS/0.04CBM  
Product Code:F387



**Car Wash Shampoo**

2LX6PCS/13.38KGS/0.023CBM  
Product Code:F332



**Wash Wax**

2LX6PCS/13.38KGS/0.023CBM  
Product Code:F333



**Bug & Tar Remover**

500MLX12PCS/7.10KGS/0.016CBM  
Product Code:F307



# TIRE & WHEEL CARE



### Tire Foam

650MLX12PCS/7.73KGS/0.017CBM  
Product Code:F003



### Tire Shine

500MLX12PCS/5.88KGS/0.014CBM  
Product Code:F010



### Wheel & Rim Cleaner

500MLX12PCS/5.88KGS/0.014CBM  
Product Code:F014



### Tire Sealant & Inflator

450MLX24PCS/9.20KGS/0.022CBM  
Product Code:F015



### Wheel Cleaner

500MLX12PCS/7.10KGS/0.016CBM  
Product Code:F305



### Wheel & Rim Cleaner (Color Changing)

500MLX12PCS/7.10KGS/0.016CBM  
Product Code:F306



**Tire Gel (Waterbased)**

500MLX24PCS/14.75KGS/0.022CBM  
Product Code:F353



**Tire Gel Enhanced (Silicone Based)**

500MLX24PCS/12.64KGS/0.022CBM  
Product Code:F354



**Tire Gel Set (Waterbased)**

500MLX12SETS/8.68KGS/0.031CBM  
Product Code:F353S



**Enhanced Tire Gel Set (Silicone Based)**

500MLX12SETS/7.72KGS/0.031CBM  
Product Code:F354S



**Tire Gel (Waterbased)**

5LX4PCS/23.20KGS/0.038CBM  
Product Code:F384W



**Tire Gel Enhanced (Silicone Based)**

5LX4PCS/20.20KGS/0.04CBM  
Product Code:F384O



**Tire Gel (Waterbased)**

500MLX24PCS/15.06KGS/0.025CBM  
Product Code:F035W



**Enhanced Tire Gel (Silicone Based)**

500MLX24PCS/13.10KGS/0.025CBM  
Product Code:F035O



**Tire Shine (Waterbased)**

500MLX12PCS/7.63KGS/0.016CBM  
Product Code:F085W



**Enhanced Tire Shine (Silicone Based)**

500MLX12PCS/6.19KGS/0.016CBM  
Product Code:F085O



**Tire Shine (Waterbased)**

5LX4PCS/22.90KGS/0.04CBM  
Product Code:F383W



**Tire Shine Enhanced (Silicone Based)**

5LX4PCS/18.10KGS/0.04CBM  
Product Code:F383O



# CAR PARTS CARE

### Carburetor & Choke Cleaner

450MLX24PCS/9.64KGS/0.024CBM  
Product Code:F005



### Carb & Choke Foam Cleaner

450MLX24PCS/11.20KGS/0.024CBM  
Product Code:F134



### Brake Cleaner

450MLX24PCS/9.05KGS/0.024CBM  
Product Code:F016



### Engine Degreaser

650MLX12PCS/8.21KGS/0.017CBM  
Product Code:F008



### Engine Degreaser (No Foam)

500MLX12PCS/5.88KGS/0.014CBM  
Product Code:F009



### Starting Fluid

450MLX24PCS/7.98KGS/0.022CBM  
Product Code:F017



### Injector & Choke Cleaner

220MLX24PCS/5.49KGS/0.014CBM  
Product Code:F088



### Injector & Choke Cleaner

450MLX24PCS/9.64KGS/0.024CBM  
Product Code:F006



### Throttle body & Air-Intake Cleaner

450MLX24PCS/8.98KGS/0.022CBM  
Product Code:F107



### A/C Cleaner

500MLX12PCS/5.93KGS/0.014CBM  
Product Code:F020



### Rubberized Undercoat

500MLX12PCS/6.00KGS/0.014CBM  
Product Code:F021



### Contact Cleaner

220MLX24PCS/5.60KGS/0.014CBM  
450MLX24PCS/9.05KGS/0.024CBM  
Product Code:F142 / F058



# COOLING SYSTEM CARE

**Radiator Coolant**

1LX12PCS/13.70KGS/0.023CBM  
Product Code:F340G



**Radiator Coolant**

1LX12PCS/13.70KGS/0.023CBM  
Product Code:F340R



**Radiator Coolant**

1LX12PCS/13.70KGS/0.023CBM  
Product Code:F340B



**Radiator Coolant**

2LX6PCS/13.38KGS/0.023CBM  
Product Code:F330G



**Radiator Coolant**

2LX6PCS/13.38KGS/0.023CBM  
Product Code:F330R



**Radiator Coolant**

2LX6PCS/13.38KGS/0.023CBM  
Product Code:F330B



**Radiator Coolant**

5LX4PCS/21.70KGS/0.04CBM  
Product Code:F382G



**Radiator Coolant**

5LX4PCS/21.70KGS/0.04CBM  
Product Code:F382R



**Radiator Coolant**

5LX4PCS/21.70KGS/0.04CBM  
Product Code:F382B



**Radiator Flush**

354MLX24PCS/9.85KGS/0.019CBM  
Product Code:F037



**Radiator Rust Preventive**

354MLX24PCS/9.85KGS/0.019CBM  
Product Code:F038



**Radiator Leak Stopper**

354MLX24PCS/9.85KGS/0.019CBM  
Product Code:F039



# ANTI FREEZE



### Anti Freeze -25°C

1LX12PCS/13.70KGS/0.023CBM  
Product Code:F341G



### Anti Freeze -25°C

1LX12PCS/13.70KGS/0.023CBM  
Product Code:F341R



### Anti Freeze -25°C

2LX6PCS/13.38KGS/0.023CBM  
Product Code:F331G



### Anti Freeze -25°C

2LX6PCS/13.38KGS/0.023CBM  
Product Code:F331R



### Anti Freeze -25°C

5LX4PCS/21.70KGS/0.04CBM  
Product Code:F385G

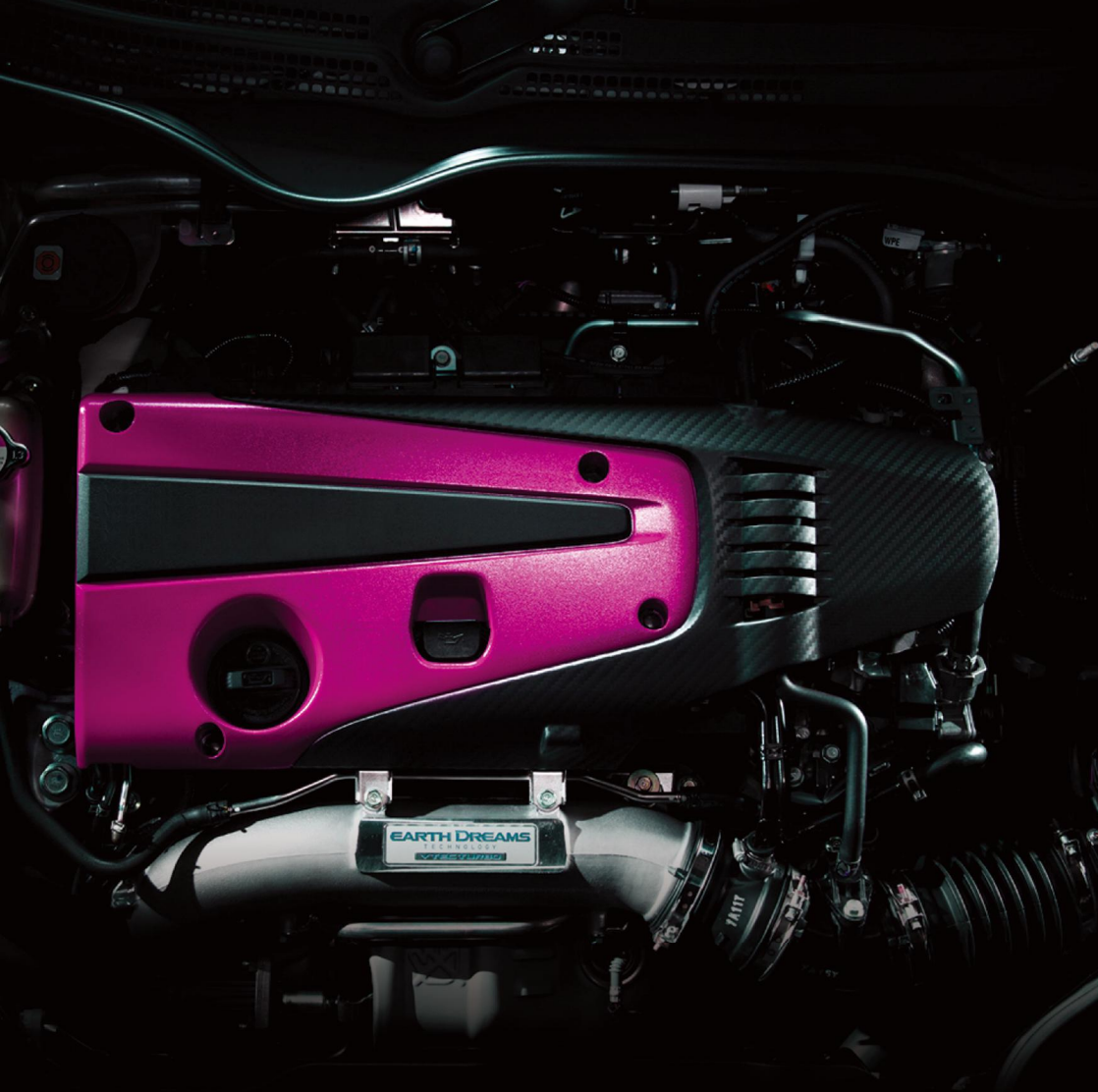


### Anti Freeze -25°C

5LX4PCS/21.70KGS/0.04CBM  
Product Code:F385R



ADDITIVES



# ADDITIVES

**Fuel Injector Cleaner**

250MLX24PCS/6.03KGS/0.017CBM  
Product Code:F045



**Diesel Fuel System Dredge**

250MLX24PCS/6.03KGS/0.017CBM  
Product Code:F046



**Octane Booster**

250MLX24PCS/6.03KGS/0.017CBM  
Product Code:F047



**Fuel Injector Cleaner**

354MLX24PCS/8.52KGS/0.024CBM  
Product Code:F053



**Diesel Fuel System Dredge**

354MLX24PCS/8.52KGS/0.024CBM  
Product Code:F054



**Octane Booster**

354MLX24PCS/8.52KGS/0.024CBM  
Product Code:F055



**Injector Cleaner**

300MLX24PCS/7.78KGS/0.02CBM  
Product Code:F144



**Octane Booster**

300MLX24PCS/7.78KGS/0.02CBM  
Product Code:F145



**Catalytic System Cleaner**

300MLX24PCS/7.78KGS/0.02CBM  
Product Code:F163



Motor Flush

443MLX24PCS/8.83KGS/0.019CBM  
Product Code:F048



Super Oil Treatment

443MLX24PCS/8.83KGS/0.019CBM  
Product Code:F049



Octane Booster

354MLX24PCS/8.52KGS/0.024CBM  
Product Code:F124



Fuel System Cleaner

473MLX12PCS/5.45KGS/0.013CBM  
Product Code:F132



Smoke Stop

354MLX24PCS/8.92KGS/0.024CBM  
Product Code:F095



Brake Fluid DOT3

250MLX24PCS/7.58KGS/0.012CBM  
Product Code:F173



Brake Fluid DOT4

250MLX24PCS/7.58KGS/0.012CBM  
Product Code:F174



Power Steering Fluid

350MLX24PCS/8.28KGS/0.025CBM  
Product Code:F179



Power Steering Fluid

473MLX24PCS/11.20KGS/0.024CBM  
Product Code:F071



Power Steering Fluid

1LX12PCS/11.25KGS/0.024CBM  
Product Code:F184





**FLAMINGO MOTOR OIL ULTRA SERIES**

**Full Synthetic Motor Oil 0W-20 For Volkswagen**

1LX12PCS/11.80KGS/0.022CBM  
 4LX4PCS/15.30KGS/0.03CBM  
 5LX4PCS/19.00KGS/0.04CBM  
 Product Code:F1402VW/F4402VW/F5402VW

★★★★★  
 ENGINE TYPE: GASOLINE  
 WITH GPF/DPF: YES  
 RECOMMENDED OIL CHANGE  
 INTERVALS: 15000KM  
 MEET OR EXCEED REQUIREMENT:  
 VW 508.00/509.00  
 API SN  
 ACEA C5-21  
 PORSCHE C20  
 VOLKSWAGEN/AUDI



F1402VW (1L)      F4402VW (4L)      F5402VW (5L)

**Full Synthetic Motor Oil 0W-20 C6**

1LX12PCS/11.80KGS/0.0223CBM  
 4LX4PCS/15.30KGS/0.03CBM  
 5LX4PCS/19.00KGS/0.04CBM  
 Product Code:F1402C6/F4402C6/F5402C6

★★★★★  
 ENGINE TYPE: GASOLINE/DIESEL/TURBO  
 WITH GPF/DPF: YES  
 RECOMMENDED OIL CHANGE  
 INTERVALS: 15000KM  
 MEET OR EXCEED REQUIREMENT:  
 ACEA C6-21/C5-21; API SP; ILSAC GF-6A  
 MB229.71/229.72; BMW LL17FE+  
 BMW LL14FE+; OPEL OV0401547  
 FIAT 9.55535GSX; CHRYSLER MS 12145  
 FORD WSS-M2C947-B1; FORD WSS-M2C962-A1  
 VOLVO VCC RBS0-2AE 0W-20  
 JLR STJLR 03-5006-16



F1402C6 (1L)      F4402C6 (4L)      F5402C6 (5L)

**Full Synthetic Motor Oil 0W-40 A3/B4**

1LX12PCS/11.80KGS/0.022CBM  
 4LX4PCS/15.30KGS/0.03CBM  
 5LX4PCS/19.00KGS/0.04CBM  
 Product Code:F1404B4/F4404B4/F5404B4

★★★★★  
 ENGINE TYPE: GASOLINE/DIESEL  
 WITH GPF/DPF: NO  
 RECOMMENDED OIL CHANGE  
 INTERVALS: 15000KM  
 MEET OR EXCEED REQUIREMENT:  
 ACEA A3/B4-21; API SP  
 MB 229.3/229.5; VW 502.00/505.00  
 PORSCHE A40; BMW LL01; RN0710/0700  
 FORD WSS-M2C937-A  
 GM-LL-A-025/B-025  
 FIAT 9.55535-S2



F1404B4 (1L)      F4404B4 (4L)      F5404B4 (5L)

# MOTOR OIL

FLAMINGO MOTOR OIL PLUS SERIES

Full Synthetic Motor Oil 0W-16 GF-6b

1LX12PCS/11.80KGS/0.022CBM  
 4LX4PCS/15.30KGS/0.03CBM  
 5LX4PCS/19.00KGS/0.04CBM  
 Product Code:F1301G6/F4301G6/F5301G6

★★★★★

ENGINE TYPE: GASOLINE/HYBRID  
 WITH GPF/DPF: YES  
 RECOMMENDED OIL CHANGE  
 INTERVALS: 10000KM  
 MEET OR EXCEED REQUIREMENT:  
 ILSAC GF-6b  
 API SP  
 TOYOTA  
 LEXUS/HONDA  
 SUZUKI/HYUNDAI



F1301G6 (1L) F4301G6 (4L) F5301G6 (5L)

Full Synthetic Motor Oil 0W-20 C5

1LX12PCS/11.80KGS/0.022CBM  
 4LX4PCS/15.30KGS/0.03CBM  
 5LX4PCS/19.00KGS/0.04CBM  
 Product Code:F1302C5/F4302C5/F5302C5

★★★★★

ENGINE TYPE: GASOLINE/DIESEL/TURBO  
 WITH GPF/DPF: YES  
 RECOMMENDED OIL CHANGE  
 INTERVALS: 12000KM  
 MEET OR EXCEED REQUIREMENT:  
 ACEA C5-21; API SP; ILSAC GF-6A  
 OPEL OV0401547  
 FIAT 9.55535-GSX  
 CHRYSLER MS-12145  
 FORD WSS-M2C947-B1



F1302C5 (1L) F4302C5 (4L) F5302C5 (5L)

Full Synthetic Motor Oil 0W-20 GF-6a

1LX12PCS/11.80KGS/0.022CBM  
 4LX4PCS/15.30KGS/0.03CBM  
 5LX4PCS/19.00KGS/0.04CBM  
 Product Code:F1302G6/F4302G6/F5302G6

★★★★★

ENGINE TYPE: GASOLINE/HYBRID  
 WITH GPF/DPF: YES  
 RECOMMENDED OIL CHANGE  
 INTERVALS: 10000KM  
 MEET OR EXCEED REQUIREMENT:  
 ILSAC GF-6a; API SP  
 FORD WSS-M2C962-A1  
 FORD WSS-M2C947-A/B1  
 GM 6094M  
 CHRYSLER MS 6395



F1302G6 (1L) F4302G6 (4L) F5302G6 (5L)

FLAMINGO MOTOR OIL PLUS SERIES

Full Synthetic Motor Oil 0W-20 Dexos1

1LX12PCS/11.80KGS/0.022CBM  
 4LX4PCS/15.30KGS/0.03CBM  
 5LX4PCS/19.00KGS/0.04CBM  
 Product Code:F1302DE/F4302DE/F5302DE

★★★★★

ENGINE TYPE: GASOLINE/HYBRID  
 WITH GPF/DPF: YES  
 RECOMMENDED OIL CHANGE  
 INTERVALS: 10000KM  
 MEET OR EXCEED REQUIREMENT:  
 GM DEXOS1 GEN3  
 GM DEXOS1 GEN2  
 ILSAC GF-6a; API SP  
 FORD WSS-M2C962-A1  
 FORD WSS-M2C947-A/B1  
 GM 6094M; CHRYSLER MS 6395



F1302DE (1L) F4302DE (4L) F5302DE (5L)

Full Synthetic Motor Oil 0W-30 Dexos1

1LX12PCS/11.80KGS/0.022CBM  
 4LX4PCS/15.30KGS/0.03CBM  
 5LX4PCS/19.00KGS/0.04CBM  
 Product Code:F1303DE/F4303DE/F5303DE

★★★★★

ENGINE TYPE: GASOLINE/HYBRID  
 WITH GPF/DPF: YES  
 RECOMMENDED OIL CHANGE  
 INTERVALS: 12000KM  
 MEET OR EXCEED REQUIREMENT:  
 GM DEXOS1 GEN3  
 GM DEXOS1 GEN2  
 ILSAC GF-6a; API SP  
 FORD WSS-M2C946-A/B1  
 FORD WSS-M2C963-A1  
 GM 6094M; CHRYSLER MS 6395



F1303DE (1L) F4303DE (4L) F5303DE (5L)

Full Synthetic Motor Oil 0W-30 A5/B5

1LX12PCS/11.80KGS/0.022CBM  
 4LX4PCS/15.30KGS/0.03CBM  
 5LX4PCS/19.00KGS/0.04CBM  
 Product Code:F1303A5/F4303A5/F5303A5

★★★★★

ENGINE TYPE: GASOLINE/DIESEL  
 WITH GPF/DPF: NO  
 RECOMMENDED OIL CHANGE  
 INTERVALS: 15000KM  
 MEET OR EXCEED REQUIREMENT:  
 ACEA A5/B5; API SP  
 BMW LL01FE; RN0700  
 VOLVO VCC 95200377  
 FORD WSS-M2C913-C/D  
 JLR STJ2R 03.5003



F1303A5 (1L) F4303A5 (4L) F5303A5 (5L)

FLAMINGO MOTOR OIL PLUS SERIES

Full Synthetic Motor Oil 0W-30 C3

1LX12PCS/11.80KGS/0.022CBM  
 4LX4PCS/15.30KGS/0.03CBM  
 5LX4PCS/19.00KGS/0.04CBM  
 Product Code:F1303C3/F4303C3/F5303C3

★★★★★  
 ENGINE TYPE: GASOLINE/HYBRID/DESEL  
 WITH GPF/DPF: YES  
 RECOMMENDED OIL CHANGE  
 INTERVALS: 12000KM  
 MEET OR EXCEED REQUIREMENT:  
 ACEA C3; API SP  
 BMW LL04  
 MB 229.31/229.52/229.51  
 RN0700/RN0710  
 VW 502.00/505.00; 504.00/507.00  
 GM DEXOS2; PORSCHE C30



F1303C3 (1L) F4303C3 (4L) F5303C3 (5L)

Full Synthetic Motor Oil 5W-20 Dexos1

1LX12PCS/11.80KGS/0.022CBM  
 4LX4PCS/15.30KGS/0.03CBM  
 5LX4PCS/19.00KGS/0.04CBM  
 Product Code:F1312DE/F4312DE/F5312DE

★★★★★  
 ENGINE TYPE: GASOLINE/HYBRID  
 WITH GPF/DPF: YES  
 RECOMMENDED OIL CHANGE  
 INTERVALS: 10000KM  
 MEET OR EXCEED REQUIREMENT:  
 GM DEXOS1 GEN3  
 GM DEXOS1 GEN2  
 ILSAC GF-6a; API SP/SP RC  
 FORD WSS-M2C960-A1  
 FORD WSS-M2C945-A  
 FORD WSS-M2C945-B1  
 GM 6094M; CHRYSLER MS 6395



F1312DE (1L) F4312DE (4L) F5312DE (5L)

Full Synthetic Motor Oil 5W-30 Dexos1

1LX12PCS/11.80KGS/0.022CBM  
 4LX4PCS/15.30KGS/0.03CBM  
 5LX4PCS/19.00KGS/0.04CBM  
 Product Code:F1313DE/F4313DE/F5313DE

★★★★★  
 ENGINE TYPE: GASOLINE/HYBRID  
 WITH GPF/DPF: YES  
 RECOMMENDED OIL CHANGE  
 INTERVALS: 12000KM  
 MEET OR EXCEED REQUIREMENT:  
 GM DEXOS1 GEN3  
 GM DEXOS1 GEN2  
 ILSAC GF-6a; API SP; GM 6094M  
 CHRYSLER MS 6395  
 FORD WSS-M2C946-A/B1  
 FORD WSS-M2C961-A1



F1313DE (1L) F4313DE (4L) F5313DE (5L)

FLAMINGO MOTOR OIL PLUS SERIES

Full Synthetic Motor Oil 5W-30 C3

1LX12PCS/11.80KGS/0.022CBM  
 4LX4PCS/15.30KGS/0.03CBM  
 5LX4PCS/19.00KGS/0.04CBM  
 Product Code:F1313C3/F4313C3/F5313C3

★★★★★  
 ENGINE TYPE: GASOLINE/DESEL  
 WITH GPF/DPF: YES  
 RECOMMENDED OIL CHANGE  
 INTERVALS: 12000KM  
 MEET OR EXCEED REQUIREMENT:  
 ACEA C3-21; API SP  
 MB 229.31/229.52/229.51  
 BMW LL04  
 VW 502.00/505.00/504.00/507.00  
 GM DEXOS2; RN0700/RN0710  
 PORSCHE C30



F1313C3 (1L) F4313C3 (4L) F5313C3 (5L)

Full Synthetic Motor Oil 5W-30 GF-6a

1LX12PCS/11.80KGS/0.022CBM  
 4LX4PCS/15.30KGS/0.03CBM  
 5LX4PCS/19.00KGS/0.04CBM  
 Product Code:F1313G6/F4313G6/F5313G6

★★★★★  
 ENGINE TYPE: GASOLINE/HYBRID  
 WITH GPF/DPF: YES  
 RECOMMENDED OIL CHANGE  
 INTERVALS: 12000KM  
 MEET OR EXCEED REQUIREMENT:  
 ILSAC GF-6a  
 API SP  
 FORD/TOYOTA /HONDA/NISSAN/  
 MAZDA/SUZUKI/HYUNDAI/KIA



F1313G6 (1L) F4313G6 (4L) F5313G6 (5L)

Full Synthetic Motor Oil 5W-30 A3/B4

1LX12PCS/11.80KGS/0.022CBM  
 4LX4PCS/15.30KGS/0.03CBM  
 5LX4PCS/19.00KGS/0.04CBM  
 Product Code:F1313B4/F4313B4/F5313B4

★★★★★  
 ENGINE TYPE: GASOLINE/DESEL  
 WITH GPF/DPF: NO  
 RECOMMENDED OIL CHANGE  
 INTERVALS: 15000KM  
 MEET OR EXCEED REQUIREMENT:  
 ACEA A3/B4-21; API SP  
 BMW LL01; MB 229.3/229.5/229.1  
 RN0710/0700  
 VW 502.00/505.00; 501.01/505.00  
 GM-LL-A-025/B-025  
 FIAT 9.55535-G1



F1313B4 (1L) F4313B4 (4L) F5313B4 (5L)

FLAMINGO MOTOR OIL PLUS SERIES

Full Synthetic Motor Oil 5W-40 C3

1LX12PCS/11.80KGS/0.022CBM  
 4LX4PCS/15.30KGS/0.03CBM  
 5LX4PCS/19.00KGS/0.04CBM  
 Product Code:F1314C3/F4314C3/F5314C3

★★★★★

ENGINE TYPE: GASOLINE/DESIEL  
 WITH GPF/DPF: YES  
 RECOMMENDED OIL CHANGE  
 INTERVALS: 12000KM  
 MEET OR EXCEED REQUIREMENT:  
 ACEA C3; API SP  
 BMW LL-04  
 MB 229.31/ 229.51  
 PORSCHE C40  
 VW 511 00



F1314C3 (1L) F4314C3 (4L) F5314C3 (5L)

Full Synthetic Motor Oil 5W-40 A3/B4

1LX12PCS/11.80KGS/0.022CBM  
 4LX4PCS/15.30KGS/0.03CBM  
 5LX4PCS/19.00KGS/0.04CBM  
 Product Code:F1314B4/F4314B4/F5314B4

★★★★★

ENGINE TYPE: GASOLINE/DESIEL  
 WITH GPF/DPF: NO  
 RECOMMENDED OIL CHANGE  
 INTERVALS: 15000KM  
 MEET OR EXCEED REQUIREMENT:  
 API SP; ACEA A3/B4-21  
 MB 229.3/229.5; RN0710/0700  
 VW 502.00/505.00; PORSCHE A40  
 BMW LL01; FORD WSS-M2C961-A1  
 GM-LL-A-025/B-025; FIAT 9.55535-M2/N2;  
 CHRYSLER MS-10725/1299; PSA B71 2290



F1314B4 (1L) F4314B4 (4L) F5314B4 (5L)

Full Synthetic Motor Oil 10W-30 A3/B4

1LX12PCS/11.80KGS/0.022CBM  
 4LX4PCS/15.30KGS/0.03CBM  
 5LX4PCS/19.00KGS/0.04CBM  
 Product Code:F1323B4/F4323B4/F5323B4

★★★★★

ENGINE TYPE: GASOLINE/DESIEL  
 WITH GPF/DPF: NO  
 RECOMMENDED OIL CHANGE  
 INTERVALS: 15000KM  
 MEET OR EXCEED REQUIREMENT:  
 API SP; ACEA A3/B4-21  
 MB 229.3/229.5  
 RN0710/0700  
 VW 502.00/505.00



F1323B4 (1L) F4323B4 (4L) F5323B4 (5L)

FLAMINGO MOTOR OIL PRO SERIES

Synthetic Motor Oil 5W-20 GF-6a

1LX12PCS/11.80KGS/0.022CBM  
 4LX4PCS/15.30KGS/0.03CBM  
 5LX4PCS/19.00KGS/0.04CBM  
 Product Code:F1212SP/F4212SP/F5212SP

★★★

ENGINE TYPE: GASOLINE/HYBRID  
 WITH GPF/DPF: YES  
 RECOMMENDED OIL CHANGE  
 INTERVALS: 8000KM  
 MEET OR EXCEED REQUIREMENT:  
 ILSAC GF-6a  
 API SP/SP RC  
 FORD WSS-M2C960-A1  
 FORD WSS-M2C945-A  
 FORD WSS-M2C945-B1  
 GM 6094M; CHRYSLER MS 6395



F1212SP (1L) F4212SP (4L) F5212SP (5L)

Synthetic Motor Oil 5W-30 GF-6a

1LX12PCS/11.80KGS/0.0223CBM  
 4LX4PCS/15.30KGS/0.03CBM  
 5LX4PCS/19.00KGS/0.04CBM  
 Product Code:F1213G6/F4213G6/F5213G6

★★★

ENGINE TYPE: GASOLINE/HYBRID  
 WITH GPF/DPF: YES  
 RECOMMENDED OIL CHANGE  
 INTERVALS: 8000KM  
 MEET OR EXCEED REQUIREMENT:  
 API SP  
 ILSAC GF-6a  
 FORD/TOYOTA/HONDA/NISSAN  
 MAZDA/SUZUKI/HYUNDAI/KIA



F1213G6 (1L) F4213G6 (4L) F5213G6 (5L)

Synthetic Motor Oil 5W-30 C3

1LX12PCS/11.80KGS/0.022CBM  
 4LX4PCS/15.30KGS/0.03CBM  
 5LX4PCS/19.00KGS/0.04CBM  
 Product Code:F1213C3/F4213C3/F5213C3

★★★

ENGINE TYPE: GASOLINE/DESIEL  
 WITH GPF/DPF: YES  
 RECOMMENDED OIL CHANGE  
 INTERVALS: 8000KM  
 MEET OR EXCEED REQUIREMENT:  
 ACEA C3-21; API SP  
 MB 229.31/229.52/229.51  
 BMW LL04  
 VW 502.00/505.00/504.00/507.00  
 GM DEXOS2; RN0700/RN0710  
 PORSCHE C30



F1213C3 (1L) F4213C3 (4L) F5213C3 (5L)

FLAMINGO MOTOR OIL PRO SERIES

Synthetic Motor Oil 5W-30 A3/B4

1LX12PCS/11.80KGS/0.022CBM  
 4LX4PCS/15.30KGS/0.03CBM  
 5LX4PCS/19.00KGS/0.04CBM  
 Product Code:F1213B4/F4213B4/F5213B4

★★★  
 ENGINE TYPE: GASOLINE/DESIEL  
 WITH GPF/DPF: NO  
 RECOMMENDED OIL CHANGE  
 INTERVALS: 10000KM  
 MEET OR EXCEED REQUIREMENT:  
 ACEA A3/B4-21; API SP  
 BMW LL01; MB 229.3/229.5/229.1  
 RN0710/0700  
 VW 502.00/505.00; 501.01/505.00  
 GM-LL-A-025/B-025  
 FIAT 9.55535-G1



F1213B4 (1L) F4213B4 (4L) F5213B4 (5L)

Synthetic Motor Oil 5W-40 A3/B4

1LX12PCS/11.80KGS/0.022CBM  
 4LX4PCS/15.30KGS/0.03CBM  
 5LX4PCS/19.00KGS/0.04CBM  
 Product Code:F1214B4/F4214B4/F5214B4

★★★  
 ENGINE TYPE: GASOLINE/DESIEL  
 WITH GPF/DPF: NO  
 RECOMMENDED OIL CHANGE  
 INTERVALS: 10000KM  
 MEET OR EXCEED REQUIREMENT:  
 ACEA A3/B4-21; API SP  
 MB 229.3/229.5; RN0710/0700  
 VW 502.00/505.00; PORSCHE A40  
 BMW LL01; FORD WSS-M2C961-A1  
 GM-LL-A-025/B-025; FIAT 9.55535-M2/N2  
 CHRYSLER MS-10725/1299; PSA B71 2290



F1214B4 (1L) F4214B4 (4L) F5214B4 (5L)

Synthetic Motor Oil 10W-30 A3/B4

1LX12PCS/11.80KGS/0.022CBM  
 4LX4PCS/15.30KGS/0.03CBM  
 5LX4PCS/19.00KGS/0.04CBM  
 Product Code:F1223B4/F4223B4/F5223B4

★★★  
 ENGINE TYPE: GASOLINE/DESIEL  
 WITH GPF/DPF: NO  
 RECOMMENDED OIL CHANGE  
 INTERVALS: 8000KM  
 MEET OR EXCEED REQUIREMENT:  
 API SP; ACEA A3/B4-21  
 MB 229.3/229.5  
 RN0710/0700  
 VW 502.00/505.00



F1223B4 (1L) F4223B4 (4L) F5223B4 (5L)

FLAMINGO MOTOR OIL ECO SERIES

Mineral Motor Oil 10W-30 SL/CF

1LX12PCS/11.80KGS/0.022CBM  
 4LX4PCS/15.30KGS/0.03CBM  
 5LX4PCS/19.00KGS/0.04CBM  
 Product Code:F1223SL/F4223SL/F5223SL

★★  
 ENGINE TYPE: GASOLINE/DIESEL  
 WITH GPF/DPF: NO  
 RECOMMENDED OIL CHANGE  
 INTERVALS: 5000KM  
 MEET OR EXCEED REQUIREMENT:  
 API SL/CF



F1223SL (1L) F4223SL (4L) F5223SL (5L)

Mineral Motor Oil 10W-40 A3/B4

1LX12PCS/11.80KGS/0.022CBM  
 4LX4PCS/15.30KGS/0.03CBM  
 5LX4PCS/19.00KGS/0.04CBM  
 Product Code:F1224B4/F4224B4/F5224B4

★★  
 ENGINE TYPE: GASOLINE/DIESEL  
 WITH GPF/DPF: NO  
 RECOMMENDED OIL CHANGE  
 INTERVALS: 8000KM  
 MEET OR EXCEED REQUIREMENT:  
 ACEA A3/B4-21; API SP  
 MB 229.1/229.3  
 RN0710/0700  
 VW 501.01/505.00  
 FIAT 9.55535-D2



F1224B4 (1L) F4224B4 (4L) F5224B4 (5L)

Mineral Motor Oil 10W-40 JASO MA2

1LX12PCS/11.80KGS/0.022CBM  
 4LX4PCS/15.30KGS/0.03CBM  
 5LX4PCS/19.00KGS/0.04CBM  
 Product Code:F1224MA/F4224MA/F5224MA

★★  
 ENGINE TYPE: GASOLINE/DESIEL/  
 MOTORCYCLE 4T  
 WITH GPF/DPF: NO  
 RECOMMENDED OIL CHANGE  
 INTERVALS: 5000KM  
 MEET OR EXCEED REQUIREMENT:  
 JASO MA2  
 API SL/CF



F1224MA (1L) F4224MA (4L) F5224MA (5L)

FLAMINGO MOTOR OIL ECO SERIES

Mineral Motor Oil 10W-50 JASO MA2

1LX12PCS/11.80KGS/0.022CBM  
 4LX4PCS/15.30KGS/0.03CBM  
 5LX4PCS/19.00KGS/0.04CBM  
 Product Code:F1225MA/F4225MA/F5225MA

★★  
 ENGINE TYPE: GASOLINE/DESIEL/  
 MOTORCYCLE 4T  
 WITH GPF/DPF: NO  
 RECOMMENDED OIL CHANGE  
 INTERVALS: 5000KM  
 MEET OR EXCEED REQUIREMENT:  
 JASO MA2  
 API SL/CF



F1225MA (1L) F4225MA (4L) F5225MA (5L)

Mineral Motor Oil 15W-40 JASO MA2

1LX12PCS/11.80KGS/0.022CBM  
 4LX4PCS/15.30KGS/0.03CBM  
 5LX4PCS/19.00KGS/0.04CBM  
 Product Code:F1234MA/F4234MA/F5234MA

★★  
 ENGINE TYPE: GASOLINE/DESIEL/  
 MOTORCYCLE 4T  
 WITH GPF/DPF: NO  
 RECOMMENDED OIL CHANGE  
 INTERVALS: 5000KM  
 MEET OR EXCEED REQUIREMENT:  
 JASO MA2  
 API SL/CF



F1234MA (1L) F4234MA (4L) F5234MA (5L)

Mineral Motor Oil 15W-40 SL/CF

1LX12PCS/11.80KGS/0.022CBM  
 4LX4PCS/15.30KGS/0.03CBM  
 5LX4PCS/19.00KGS/0.04CBM  
 Product Code:F1234SL/F4234SL/F5234SL

★★  
 ENGINE TYPE: GASOLINE/DESIEL  
 WITH GPF/DPF: NO  
 RECOMMENDED OIL CHANGE  
 INTERVALS: 5000KM  
 MEET OR EXCEED REQUIREMENT:  
 API SL/CF



F1234SL (1L) F4234SL (4L) F5234SL (5L)

FLAMINGO MOTOR OIL ECO SERIES

Mineral Motor Oil 20W-50 JASO MA2

1LX12PCS/11.80KGS/0.022CBM  
 4LX4PCS/15.30KGS/0.03CBM  
 5LX4PCS/19.00KGS/0.04CBM  
 Product Code:F1245MA/F4245MA/F5245MA

★★  
 ENGINE TYPE: GASOLINE/DESIEL/  
 MOTORCYCLE 4T  
 WITH GPF/DPF: NO  
 RECOMMENDED OIL CHANGE  
 INTERVALS: 5000KM  
 MEET OR EXCEED REQUIREMENT:  
 JASO MA2  
 API SL/CF



F1245MA (1L) F4245MA (4L) F5245MA (5L)

Mineral Motor Oil 20W-50 SL/CF

1LX12PCS/11.80KGS/0.022CBM  
 4LX4PCS/15.30KGS/0.03CBM  
 5LX4PCS/19.00KGS/0.04CBM  
 Product Code:F1245SL/F4245SL/F5245SL

★★  
 ENGINE TYPE: GASOLINE/SCOOTER  
 WITH GPF/DPF: NO  
 RECOMMENDED OIL CHANGE  
 INTERVALS: 5000KM  
 MEET OR EXCEED REQUIREMENT:  
 API SL/CF



F1245SL (1L) F4245SL (4L) F5245SL (5L)

Mineral Motor Oil SAE 50 SL/CF

1LX12PCS/11.80KGS/0.022CBM  
 4LX4PCS/15.30KGS/0.03CBM  
 5LX4PCS/19.00KGS/0.04CBM  
 Product Code:F12N5SL/F42N5SL/F52N5SL

★★  
 ENGINE TYPE: GASOLINE/DESIEL  
 WITH GPF/DPF: NO  
 RECOMMENDED OIL CHANGE  
 INTERVALS: 5000KM  
 MEET OR EXCEED REQUIREMENT:  
 API SL/CF



F12N5SL (1L) F42N5SL (4L) F52N5SL (5L)

# DE-RUST LUBRICANT



## De-Rust Lubricant

450ML\*24PCS/8.98KGS/0.022CBM  
Product Code:F007

### FEATURES:

Adopting special silicone ingredient, DE-RUST & LUBRICANT can foam a protective film on the metallic surface so as to prevent the surface from contacting with moisture and air, thus avoid the surface from oxidizing and rusting. It is widely applied in the protection of precision components, electric fitting contacts, iron and steel parts as well as supersensitive components. With high permeating ability, it is commonly used in the maintenance of machines, armament, electric tools and precision instruments. It can stop squeaking of chairs, door hinges, metal gate and vehicle parts, at mean time, eliminating moistures so as to prevent the surface from corroding and making sure of its good lubricating performance.

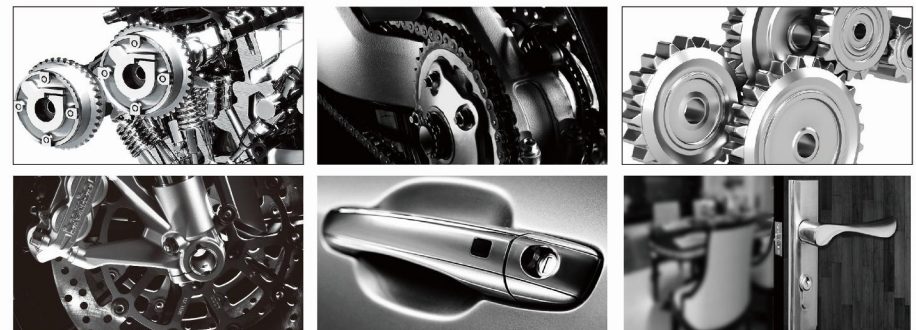


## Chain Clean / Chain Lube

220ML\*24PCS/5.65KGS/0.014CBM  
Product Code:F110/F108

### FEATURES:

1. Stops Squeaks: Penetrates and lubricates hinges, castors, springs, taps, handles, windows, pedals and office chairs. 2. Drives Out Moisture: Drives out water on metal surfaces e.g. electrical contacts, car ignitions, tools (incl. garden). Motorcycle engines and outboard motors. 3. Cleans And Protects: Dissolves crayon marks, grease, tar, gum, adhesives. Loosens hard water deposits. Leaves protective film against rust and corrosion on bikes, prams, chrome parts, motorcycles, outboard motors and tools. 4. Loosens Rusted Parts: Thoroughly penetrates and loosens rusted, corroded and seized nuts, bolts, controls, cables and other fasteners. 5. Frees Sticky Mechanisms: Un-jams and lubricates door locks, zippers, sewing machines, controls, linkages and cables.



# NANO CERAMIC COATING



## Nano Ceramic Coating Kit

(30ML+50MLx2)\*12PCS/7.95KGS/0.068CBM  
Product Code:F101S

### APPLICATING CAPACITY:

Bottle A : Degreasing Agent      Bottle B : Nano Ceramic Coating  
Bottle C: Polishing Protectant

### USAGES:

A. Wash the car with F030 Car Shampoo, remove all dirties on the paint surface carefully. B. Use polishing machine with F050 Rubbing Compound/ F051 Polishing glaze/F052 Premium Coating Film(subject to paint conditions, new car use F052 only), then wash and dry the car. **VERY IMPORTANT** with this step to make sure the paint in perfect gloss. C. Spray Degreasing agent(Bottle A) on the car paint to remove grease, and wash by clean water then dry by air blower. D. Visual check with all place, ensure no any dust, scratch on the paint. E. Pour the NANO CERAMIC COATING(Bottle B) on the matched sponge and small cloth with moderate amounts, then apply it to the surface equally in the order of up-down and left-right. If uneven lines left in plating period, so will left after plating. So please be sure to apply evenly, **DO NOT POUR NANO CERAMIC COATING ON THE CAR DIRECTLY.** Please operate with small area(50\*50cm) each time, one piece finished then start another. Avoid large-area operation. F. Nano Ceramic Coating operating time as below, for reference only:

Temperature	<10°C	10-15°C	15-20°C	20-25°C	>25°C
Solidify time(minutes)	15	10	5	3-5	1-3
Operating time(minutes)	10-15	5-10	3-5	2-3	1

G. After complete the coating with all paint surface, wait 1 hour to let coating film dry. H. Spray POLISHING PROTECTANT (Bottle C) on dry coating film and polish it equally. I. Visual Check with all coating film to avoid faulty area. J. Please wait 2 hours after all operation, to let it crystallize completely for the best effect. The car can be moved after waiting time. But do not wash it or pour water on it in 3 days. In case of water contact, dry off immediately. K. Flamingo advise to use POLISHING PROTECTANT(Bottle C) in 2nd time after 3 months.





SPRAY PAINT

# SPRAY PAINT

**Spray Paint**

450MLX24PCS/8.36KGS/0.024CBM  
Product Code:F056



**Gold Spray Paint**

450MLX24PCS/8.36KGS/0.024CBM  
Product Code:F056#35



**Zinc Cote**

450MLX24PCS/8.36KGS/0.024CBM  
Product Code:F166



**Paint Remover**

450MLX24PCS/8.32KGS/0.024CBM  
Product Code:F059



**Metallic Spray Paint**

450MLX24PCS/8.32KGS/0.024CBM  
Product Code:F060



**Fluorescent Spray Paint**

450MLX24PCS/8.32KGS/0.024CBM  
Product Code:F061



**High Temperature Resistant**

450MLX24PCS/8.32KGS/0.024CBM  
Product Code:F062#39/F062#36



**Chrome Spray Paint**

330MLX12PCS/3.32KGS/0.009CBM  
Product Code:F057

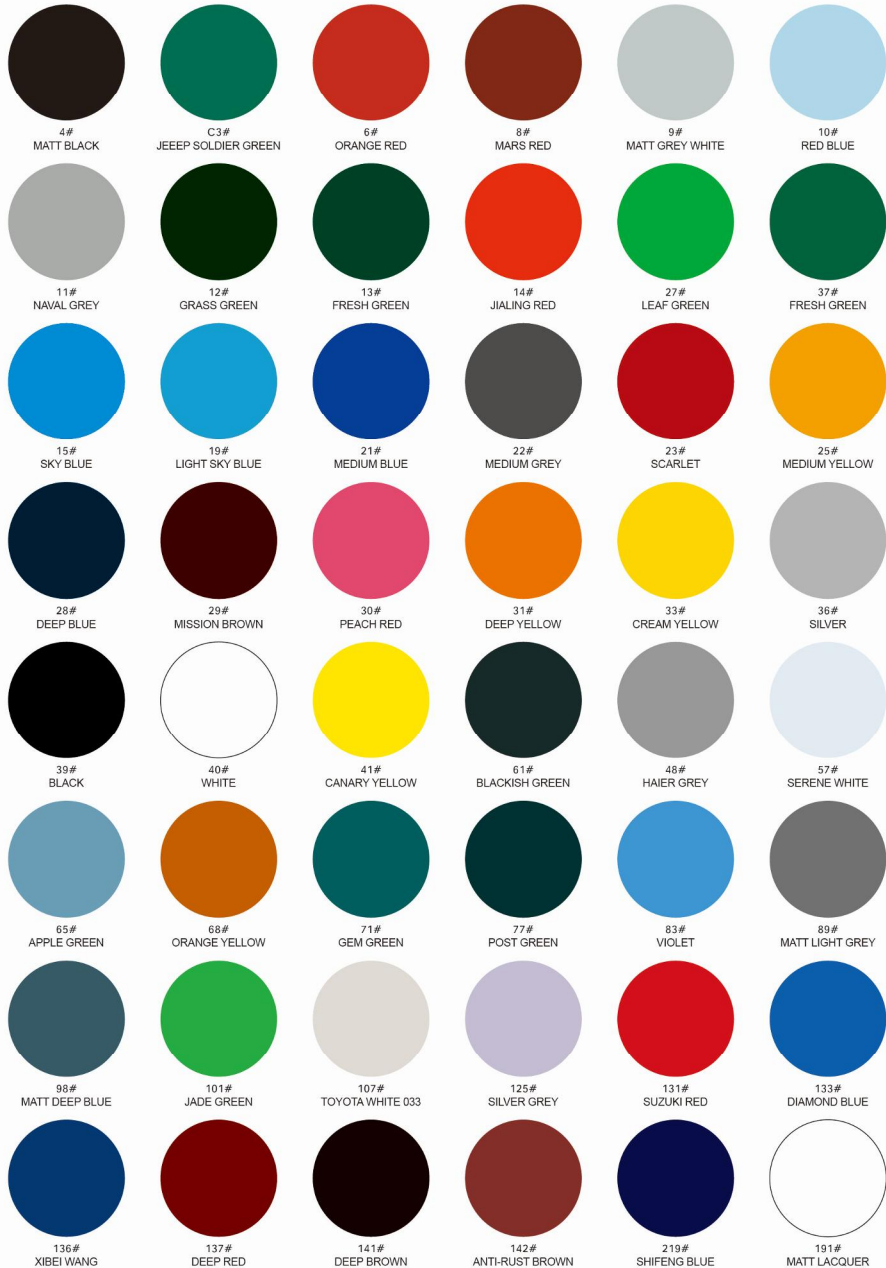


**Bright Gold Spray Paint**

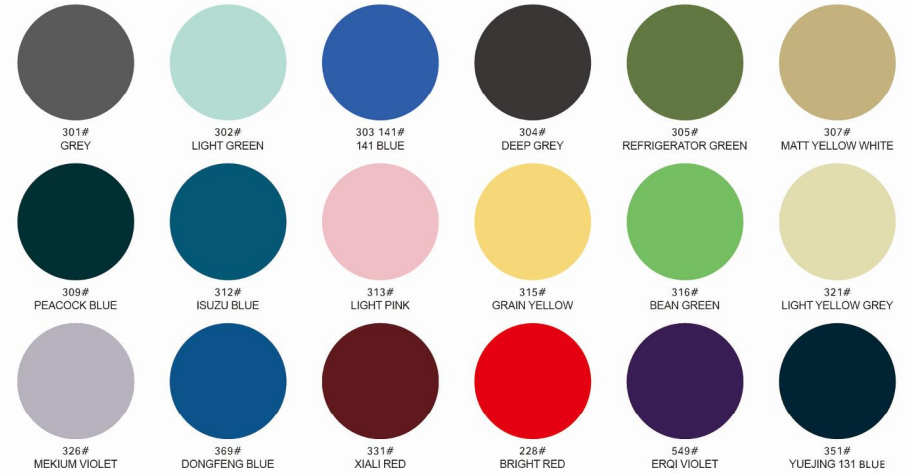
330MLX12PCS/3.32KGS/0.009CBM  
Product Code:F143



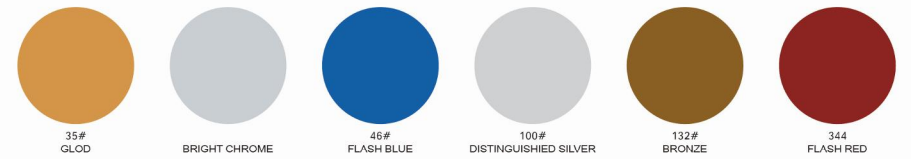
SPRAY PAINT



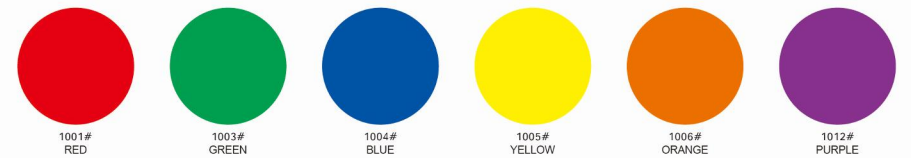
SPRAY PAINT



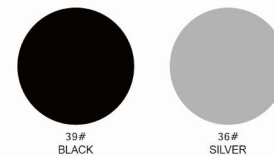
Metallic Spray Paint



Fluorescent Spray Paint



High Temperature Resistant Spray Paint



# NEW ITEMS



### Quick Fresh Deodorizer

220MLX24PCS/5.60KGS/0.014CBM

Product Code: F139L  
F139V  
F139G  
F139C



### Rubber Coating Leak Stop Sealant

500MLX12PCS/6.00KGS/0.014CBM

Product Code: F159B



### Rubber Coating Leak Stop Sealant

500MLX12PCS/6.00KGS/0.014CBM

Product Code: F159W



### Rubber Coating Leak Stop Sealant

500MLX12PCS/6.00KGS/0.014CBM

Product Code: F159G



### Pipeline Cleaning Agent

450MLX24PCS/6.00KGS/0.024CBM

Product Code: F125





T-Shirt



Display Stand



Ball-pen

Notebook

Stickers

Mouse pad



Umbrella

Bumbersoll

Flamingo Car Care Tech. Co.,Ltd., your reliable partner !  
We're looking forward to building long-term business relationships with you !  
Now worldwide distributors wanted !!!



**CONSISTENT QUALITY**

- A. More than 17 years car care products exporting experience
- B. No.1 in velocity of development in this field
- C. All products engineered in USA
- D. Strict quality control system has been built based on cooperating with US market more than 10 years



**INNOVATION**

- A. Professional R&D team
- B. Innovation is our core culture
- C. Your new idea can be embraced any time



**COMPETITIVE PRICE**

- A. Good sense of controlling cost
- B. Long-term partner relationships with our suppliers



**ON TIME DELIVERY**

- A. Full experience in handling export trade
- B. Delivery date is confirmed by ERP system, which includes every relevant department on production capacity and quality control



**SERVICE**

- A. Offer customize service
- B. "Customers first" is our service tenet
- C. A good listener to your requirement
- D. Instant response